

7. Level 2 Repair

7-1. Disassembly

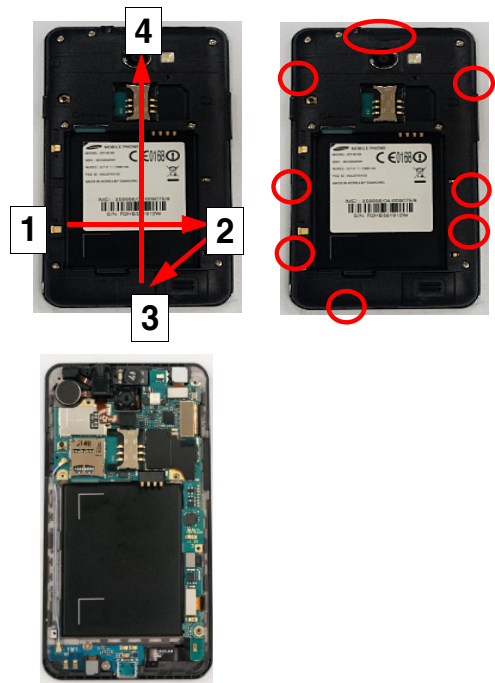
1



Release the screws at 7 points.
(Torque: 1.0 ± 0.1 kgf.cm)
(Size: M1.4*L3.5)

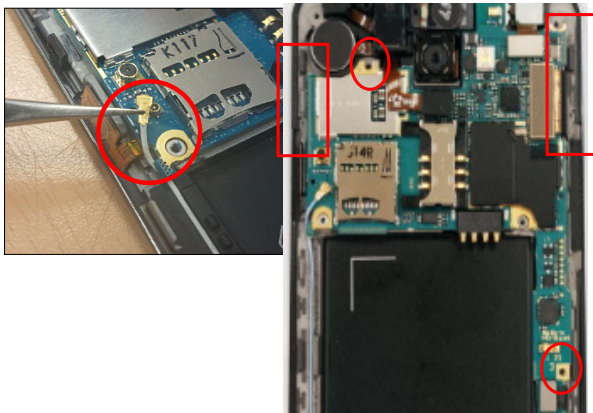
DO NOT MAKE SCRATCH ON THE REAR.

2



Disjoint hook 12 points at the rear
(Follow the order)

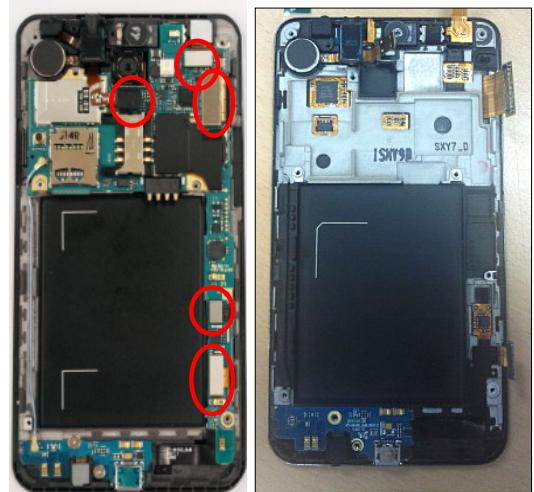
3



Separate the cable from the PBA.
Release the screw 2point(Size: M1.4*L2.5)
(Torque: 1.1 ± 0.1 kgf.cm)
Detach the side FPCBs from the Bracket.

Be careful not to rip up the FPCBs.

4



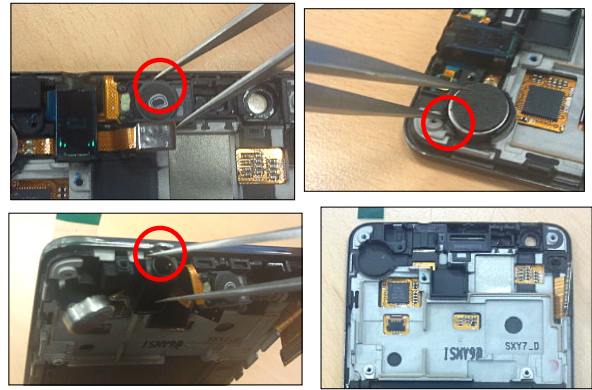
Separate all connectors from the PBA.
Separate the PBA from the Front.

5



Release the screw 2point(Size: M1.4*L1.5)
(Torque: 1.0±0.1 kgf.cm)
Separate the sub PBA from the PBA.

6

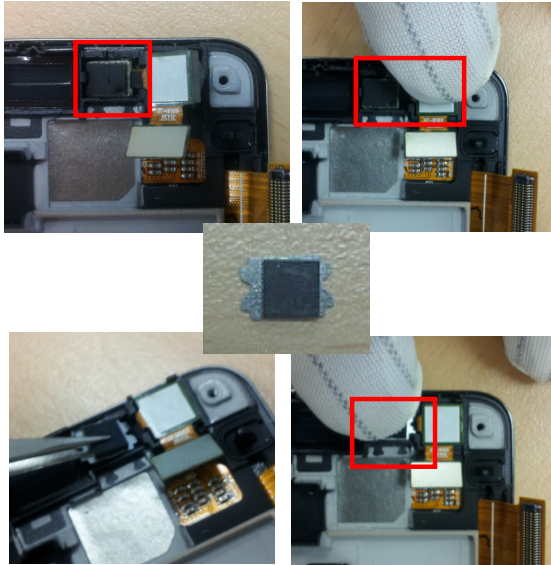


Separate the Receiver Ass'y from the Front.
(Insert a tool into the holes.)

Be careful not to rip up the FPCBs.

7-2. Assembly

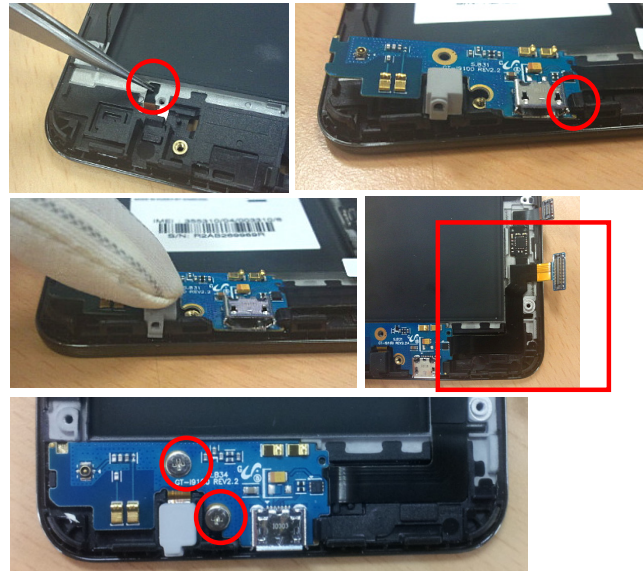
1



Insert the sensor left side first to the right, and then the VGA camera into the front.
Put the chassis on the sensor right first to the left side and push it softly.

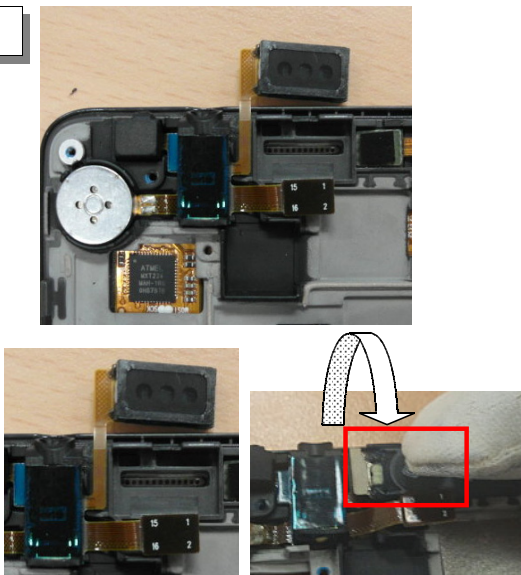
Be careful not to damage the camera FPCB.

2



Attach the FPCB on the Front.
Insert the sub PBA in the hook.
Attach the FPCB on the Front.
Screw 2 points.(Size: M1.4*L1.5)
(Torque: 1.0±0.1 kgf.cm)

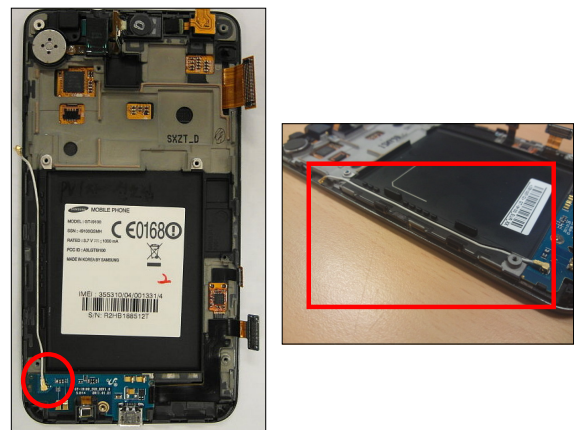
3



Put the Receiver Ass'y on the Front.
Furl the Receiver and put it on the Front.

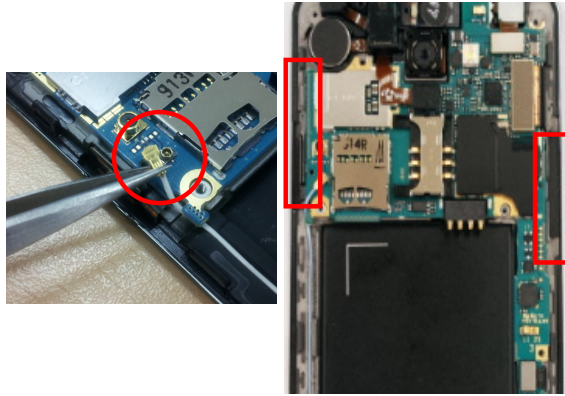
Be careful to damage the FPCB.

4



Connect the cable on the sub PBA.
Organize the cable on the Front

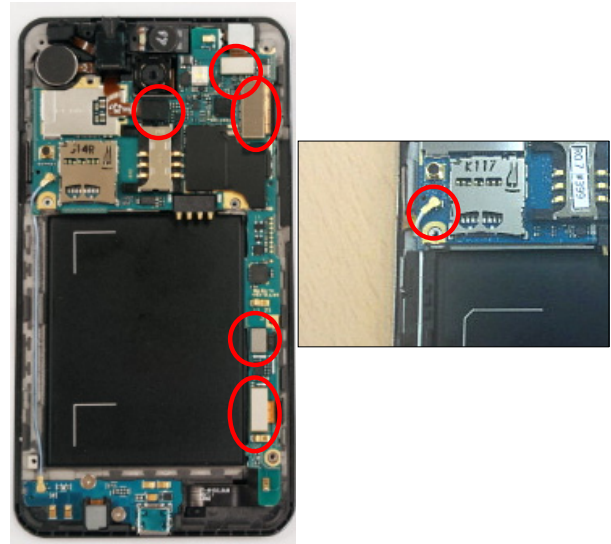
5



Put the PBA on the Front.
Attach the side FPCBs on the Bracket.

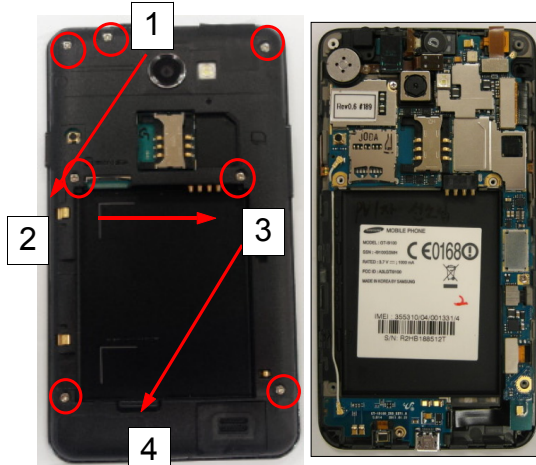
Be careful to damage the cable.

6



Connect all the connector on the PBA.
Connect the cable on the PBA.

7



Assemble the Rear and the Front.
(Follow the order)
Hook at the 8 points.

8



Screws at 7 points.
(Torque: 1.0 ± 0.1 kgf.cm)
(Size: M1.4*L3.5)

DO NOT MAKE SCRATCH ON THE REAR.